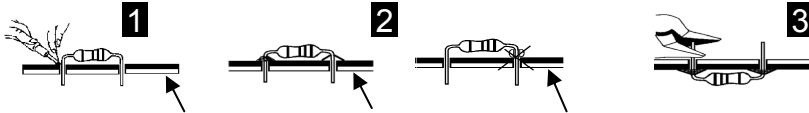


Soldering - Solderen - Soudage - Lötten - Soldadura - Lötning - Juottaminen - Saldatura - Solda

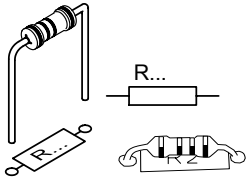
max.  
40W



Component side - componentzijde - Côte composants - Bauteileseite - Lado de los componentes

**START**

**1** Resistor - Weerstand - Résistance - Widerstand - Resistencia - Mot tand - Vastus - Resistenze



◇ R1, R2 : 10K

◇ R3 : 100

◇ R4 : 100K

◇ R5 ... R7 : 1K

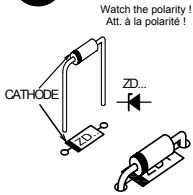
(Brown, Black, Orange) - (Bruin, Zwart, Oranje) - (Brun, noir, Orange) - (Braun, Schwarz, Orange) - (Brun, Svart, Orange) - (Ruskea, Musta, Oranssi) - (Marrón, Negro, Naranja) - (Castanho, Preto, Laranja) - (Marrone, Nero, Aranciato)

(Brown, Black, Brown) - (Bruin, zwart, Brown) - (Brun, noir, Brun) - (Braun, Schwarz, Braun) - (Brun, Svart, Brun) - (Ruskea, Musta, Ruskea) - (Marrón, Negro, Marrón) - (Castanho, Preto, Castanho) - (Marrone, Nero, Marrone)

(Brown, Black, Yellow) - (Bruin, zwart, Geel) - (Brun, noir, Jaune) - (Braun, Schwarz, Gelb) - (Brun, Svart, Gul) - (Ruskea, Musta, Keltainen) - (Marrón, Negro, Amarillo) - (Castanho, Preto, Amarelo) - (Marrone, Nero, Giallo)

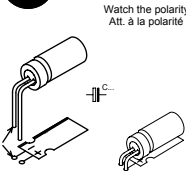
(Brown, Black, Red) - (Bruin, Zwart, Rood) - (Brun, Noir, Rouge) - (Braun, Schwarz, Rot) - (Brun, Svart, Röd) - (Ruskea, Musta, Punainen) - (Marrón, Negro, Rojo) - (Castanho, Preto, Encarnado) - (Marrone, Nero, Rosso)

**2** Zenerdiode



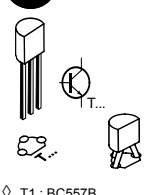
◇ ZD1 : 3V0

**3** Electrolytic capacitor



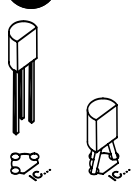
◇ C1 : 10µF

**4** Transistors



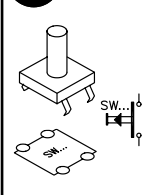
◇ T1 : BC557B  
◇ T2, T3 : BC547B

**5** IC



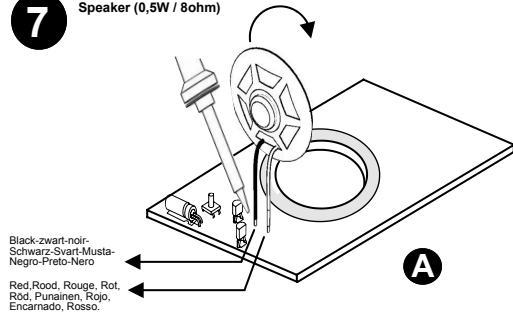
◇ IC1 : M8031-2S

**6** Push button



◇ SW1

**7** Speaker (0,5W / 8ohm)



Black-zwart-noir-Schwarz-Svart-Musta-Negro-Preto-Nero

Red, Rood, Rouge, Rot, Röd, Punainen, Rojo, Encarnado, Rosso.

**8** Batteryholder + batterysnap

