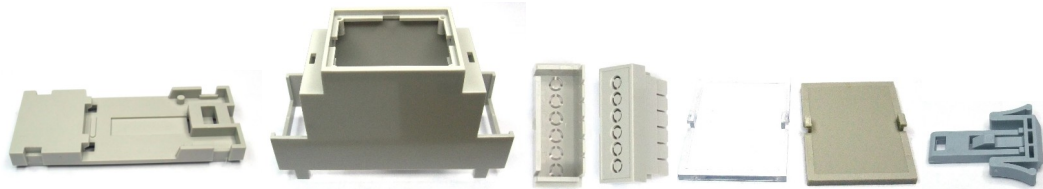


## DIN Rail Box

The D2MG is a self assembly enclosure suitable for mounting directly on to DIN rail. The case is supplied with a clear and solid cover. There are six pieces to each box, base, body of case, two cable outlet covers, two lids and sprung plastic rail mounting clip. The box clips together, no tools are required.

Before assembly check you have all the required parts and assemble it this order.



### Assembly Instructions.

1/ Fit your PCB in to the base of the case with components inside the enclosure.

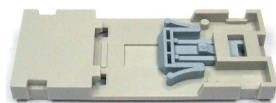


2 Depending upon which cable terminations you are using on the circuit board you will have 'knock out' the appropriate plastic holes on the cable outlet covers.

3/ Fit the two cable outlet covers from the top.



4/ Select either the solid or clear cover, which ever lid suits your application fit this.



5/ Fit the sprung plastic rail mounting clip in the base.



6/ Fit the base over the circuit board with the sprung mounting rail visible.